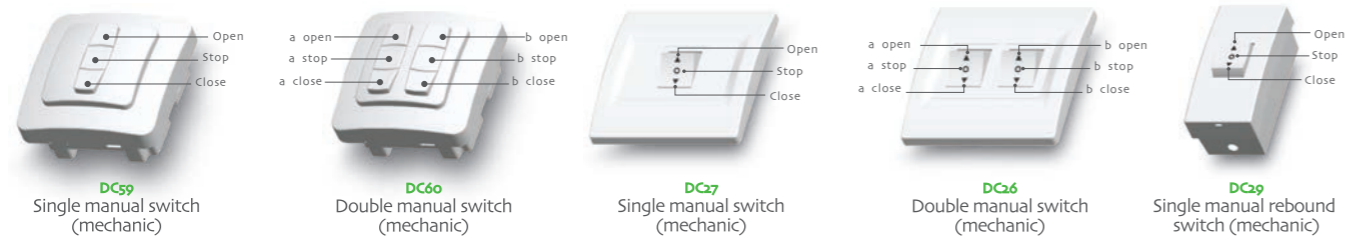


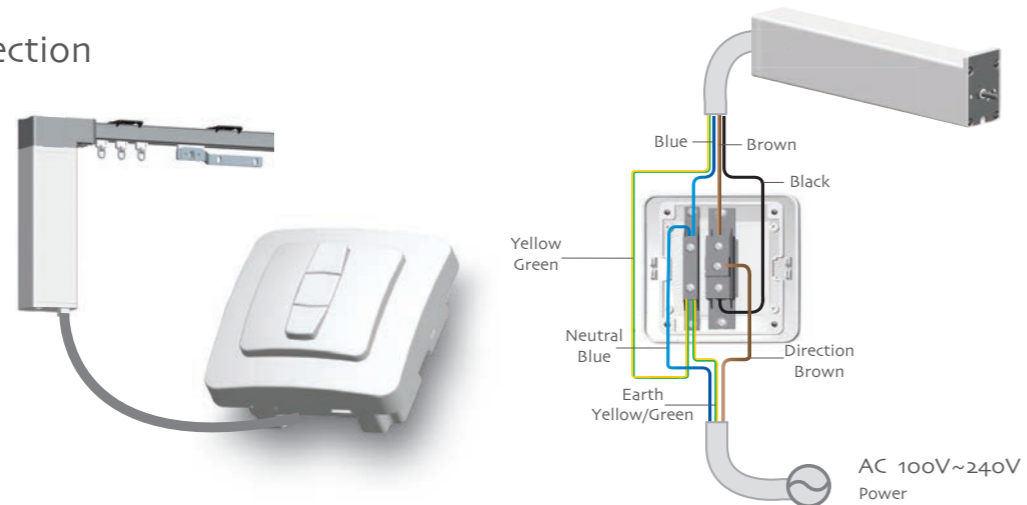
C Common switches for curtain motor

Control system



C Connection

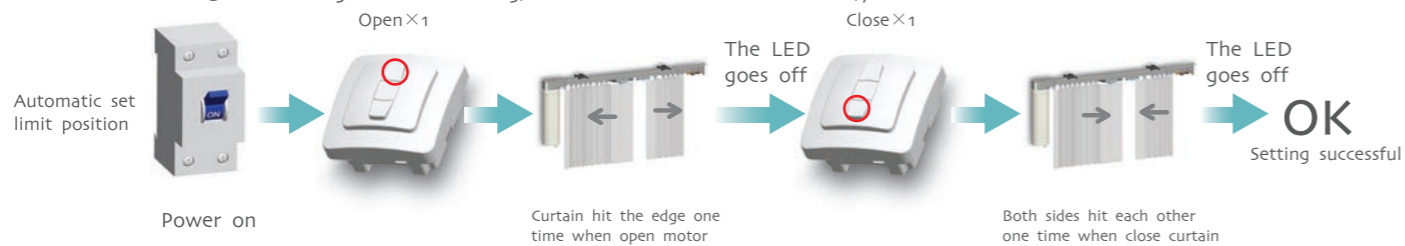
Control system



C Set limit position and cancel the limit

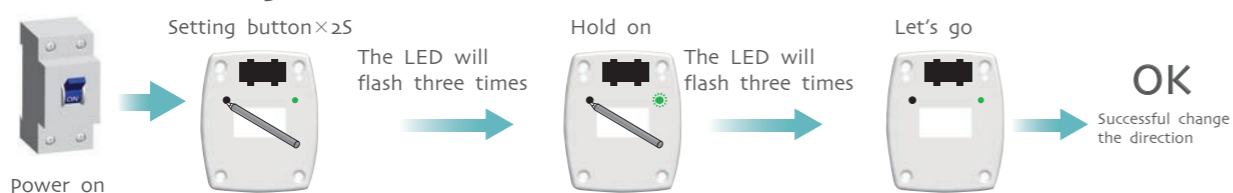
Control system

- ① this motor have limit memorize function, After the limit setting, black out and do not move the curtain, the limit will remain unchanged after power on.
- ② if pull the curtain after blackout, the limit memory will be erased. Power on again, the motor will auto set the limit once again. (If the limit can not be auto setting, you can use the switch to turn the motor move opposite to active the auto setting.)
- ③ When confront obstacle during operation, the motor will stop. The obstacle point will be the new limit. The motor will auto setting the limit once again.
- ④ When doing the auto setting, the motor will meet an obstacle, you shall wait until the motor indicator turns off.



C The reverse of direction setting

Control system



DT82TS

DC Curtain Motor Specification

Version NO. : A/00

T Product characteristics

Technical support

Pls read the instruction before assembly.

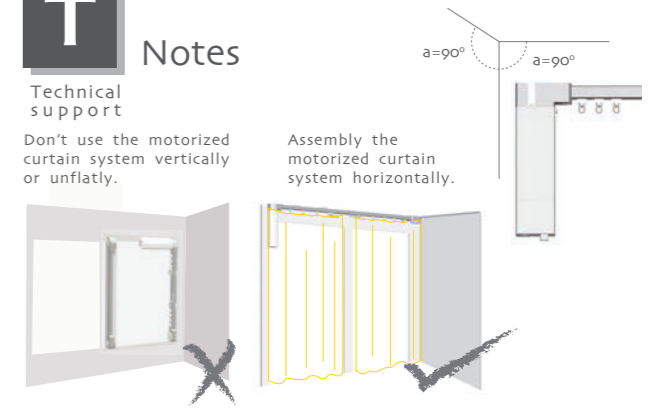


T Notes

Technical support

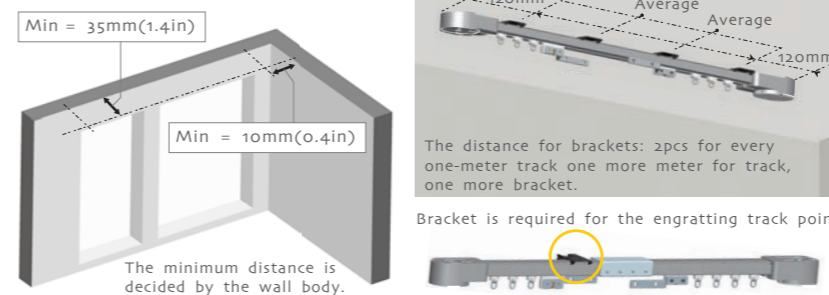
Don't use the motorized curtain system vertically or unflatly.

Assembly the motorized curtain system horizontally.



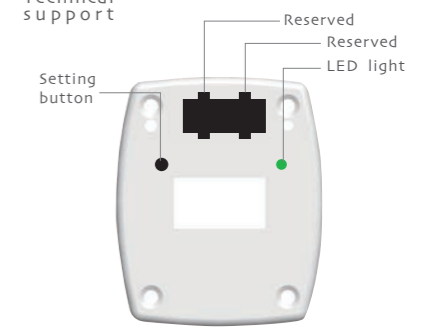
T Assembly dimension

Technical support



T Inspection for motor buttons

Technical support



T Motor function

Technical support

Electronic
Electronic limit + Resistance and stop function + Limit memorized after power off + external electricity switch control

